

# Hydraulic Power Pumps for Synchronous Lifting System

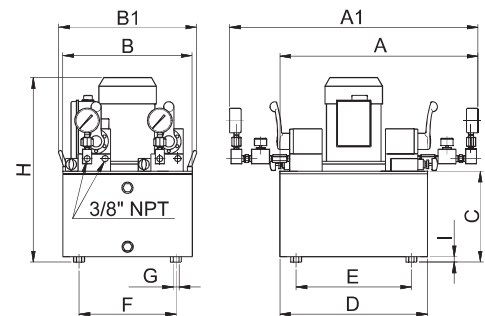
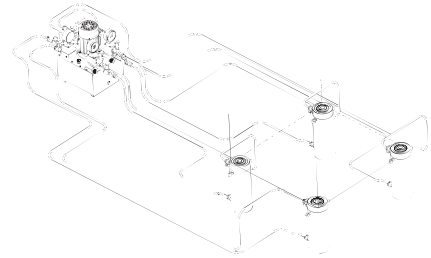
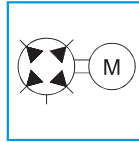
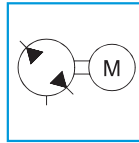
## ME - SPLIT FLOW Series

Reservoir Capacity:  
**10 to 40 litres**

Oil Delivery at Rated Pressure:  
**0,45 – 0,9 litre/min.**

Motor Size:  
**2,2 kW (3 hp)**

Maximum Operating Pressure:  
**700 bar (10,000 psi)**



### FEATURES

The **SPLIT FLOW** Hydraulic Power Pump has 2 or 4 independent valve outlets delivering a constant amount of oil, even if the pressure in each line is not the same. Flows and pressures of each pump are independent regardless of the load.

They are equipped with:-

- One 3-phase electric motor.
- 2 or 4 independent hydraulic pumps with choice of Single- or 2-speed version.
- 2 or 4 (one for each port) 4-way, 3-position manual control valves with piloted check and 150 bar pressure setting on 'B' return port.
- 2 or 4 flow control valves (one for each port) for controlled load lowering.
- 2 or 4 pressure gauges (one for each port).
- Reservoir tank capacity of 10, 20 & 40 litres.

### Application

This pumps offered efficient and economical solution to lift up to a maximum of 4 cylinders with different loads or uneven load distribution. Pump configuration is based on equal geometrical pressure lines, without any external control on the actual stroke, this Split Flow power pump provides accurate  $\pm 3\%$  synchronous lifting with visual control of the operation. It also allow synchronous load lowering operations under load when using with double-acting cylinders. For automatic control of the down stroke speed without pressure oscillations & load chattering, use **VRB38** Counterbalance Valve.

### OPERATIONAL CHARACTERISTICS ACCORDING TO THE CHOSEN PUMP

MODEL	No. Outlets	Oil Delivery		Pressure		TEFC Induction Motor		
		1 <sup>st</sup> stage	2 <sup>nd</sup> stage	1 <sup>st</sup> stage	2 <sup>nd</sup> stage	Voltage	Power	Speed
		l/min	l/min	bar	bar		kW	rpm
MEM	2	-	0,9	-	700	400V-50Hz (3-phase)	2,2	2800
MEN	2	2,2	85					
MEQ	4	-	0,45	-				

Reservoir Capacity	Usable Oil Volume	Dimensions (mm)										
		litres	litres	A	A1	B	B1	C	D	E	F	G
10 low	7,7	555	700	360	378	129	410	320	270	M8	410	10
20	17,7				-							
40	35,8	570		600			440	350	510	∅9	518	40

### MODEL CODING

ME	#	#	M52	G	U
Motor Type	Pump Type	Reservoir Capacity	Valve Type	Pressure Gauge	Unidirectional Flow Regulator

MODEL	No. Outlets	Oil Delivery	Pressure	Motor Voltage	Reservoir Capacity
MEM20M52GU	2	0,9 l/min	700 bar	400V-50Hz (3-phase)	20 litres
MEQ40M52GU	4	0,45 l/min			40 litres