

EPower700

The Ultimate Hydraulic Force

**Professional High Pressure Hydraulic Cylinders,
Pumps, Pullers, Tools and Systems**



CE



- Industrial Applications
- Maintenance & Repairs
- Construction Applications
- Pre-stressing & Post-tensioning
- Foundation Testing
- Heavy Load Lifting
- Synchronous Lifting System

**For the Professionals
For the Specialists
For the Experts**



HYDRAULIC CYLINDERS

(700 bar / 10,000 psi)

• Use in any directional position • Nitreg **ONC** – treated surface • ANSI B30.1 Standard • Safety Factor of 2



CMI Series (General Purpose)

- Single-acting, Spring Return
- 5 to 100 Tonne Capacities
- 25 to 350 mm Stroke
- Solid Piston - Collar Threads, Piston Rod Internal Threads & Base-mounting Holes
- Removable Saddle & Wiper Seal



COI Series (Multi-Purpose)

- Double-acting, Oil Return
- 10 to 500 Tonne Capacities
- 150 to 325 mm Stroke
- Solid Piston - Collar Threads, Piston Rod Internal Threads & Base-mounting Holes
- Removable Saddle & Wiper Seal



CML Series (Aluminium Body)

- Single-acting, Spring Return
- 50 to 100 Tonne Capacities
- 50 to 150 mm Stroke
- Solid Steel Piston

COL Series (Aluminium Body)

- Double-acting, Oil Return



CMC Series (Flat Profile)

- Single-acting, Spring Return
- 5 to 150 Tonne Capacities
- 6 to 15 mm Stroke
- Solid Piston
- Lightweight & compact
(For confined working space)



CMP Series (Low Height)

- Single-acting, Spring Return
- 10 to 100 Tonne Capacities
- 25 to 50 mm Stroke
- Solid Piston
- Lightweight & low height
(For limited working space)



CMT Series (Pull & Tension)

- Single-acting, Spring Return
- 2 to 60 Tonne Capacities
- 127 to 150 mm Stroke
- Solid Piston
- Steel & Aluminium versions
(Al – Anodized treatment)



CMF Series (Hollow Piston)

- Single-acting, Spring Return
- 10 to 100 Tonne Capacities
- 50 to 160 mm Stroke
- Collar Threads, Rod Internal Threads & Base-mounting Holes
(Push, Pull & Tension)



COF Series (Hollow Piston)

- Double-acting, Oil Return
- 30 to 200 Tonne Capacities
- 75 to 250 mm Stroke
- Up to 100T: Collar Threads, Rod Internal Threads & Base-mounting Holes
(Push, Pull & Tension)



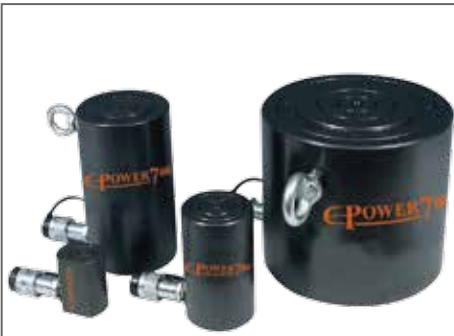
COS Series (High Tonnage)

- Double-acting, Oil Return
- 50 to 500 Tonne Capacities
- 25 to 300 mm Stroke
- Solid Piston
- Options: Integrated Tilt Saddle & Base-mounting Holes

HYDRAULIC CYLINDERS

(700 bar / 10,000 psi)

- Use in upright position
- **Nitreg ONC** – treated surface
- Safety Factor of 2



CGS Series (High Tonnage)

- Single-acting, Load Return
- 50 to 500 Tonne Capacities
- 25 to 300 mm Stroke
- Solid Piston with stroke limit colored zone. Overflow port
- Options: Integrated Tilt Saddle, Base-mounting Holes & End of Stroke Ring Nut



CGG Series (Lock Nut)

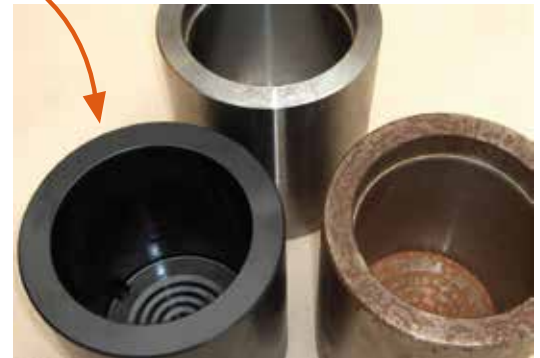
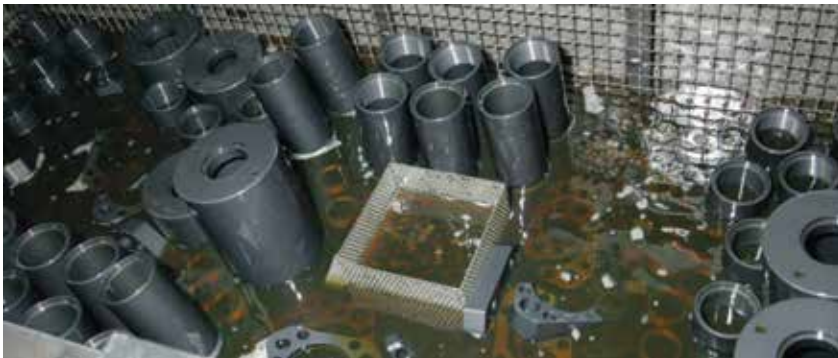
- Single-acting, Load Return
- 30 to 500 Tonne Capacities
- 25 to 300 mm Stroke
- Solid Threaded Piston with stroke limit colored zone. Overflow port
- Options: Integrated Tilt Saddle, Base-mounting Holes & End of Stroke Ring Nut



CGR Series (Pancake Lock Nut)

- Single-acting, Load Return
- 110 to 900 Tonne Capacities
- 50 mm Stroke
- Solid Threaded Piston with Integrated Tilt Saddle (Mechanical load holding & for limited working space)

NITREG ONC – Nitrocarburation Treatment



- **Nitreg ONC** process, a thermo-chemical treatment on steel surface of cylinders & components, an alternative to case hardening by carbon.
- Gaseous nitro-carburizing process integrate with oxidation phase and enhance with anti-rust oil impregnates the treated surfaces that make the steel material appears 'black'.

Unique Benefits of **NITREG ONC** Treated Cylinders: -

- ⇒ Excellent Resistant to Corrosion
- ⇒ High Resistant to Mechanical Wear
- ⇒ Withstand off-centred load better & sideload forces up to 8% of cylinder nominal capacity
 - Improved sliding contact without seize by reducing or eliminating piston grip against cylinder wall.
- ⇒ Increased Resilience - Absorbs Shock Energy Better.
- ⇒ Increased Cylinder Service Life & Reliability.

HYDRAULIC PUMPS

(Up to 2800 bar / 40,600 psi)

- Use with single- or double-acting cylinders / tools.
- Wide choice of flow rate options & various reservoir tank sizes to suit different application needs.
- Electric models are equipped with TEFC Induction Motor, thermal switch & Class IP54 protection.
- Hand or Pedal 24VAC Remote-control options for motor or solenoid valve.
- All Power Pumps conform to CE specifications & standards.

All EU-manufactured products meet the European Safety Directives.



PS Series

Steel Hand Pumps

- Single Stage
- Gauge direct mount port
- Handle lever lock
- Nitreg ONC surface-treated
- 400-700-1000 bar



PV Series

Steel Hand Pumps

- Two Stage
- Gauge direct mount port
- Carrying handle
- Large oil delivery
- 700 bar



PN Series

Aluminium Hand Pumps

- Single or Two Stage
- Lightweight & durable
- Handle lever lock
- Pilot-check valve option
- 700-1000-1600-2800 bar



MLP Series

Air-Hydraulic Power Pumps

- Reciprocating Air Motor
- Manual or Pedal Control
- Lightweight & versatile
- 100-350-700-1000-1500-2100 bar



MC Series (Micro)

Electric-Hydraulic Pumps

- 0.25 kW TEFC Induction Motor
- Single Stage (0.32 lpm)
- Remote Control Pendant
- Compact & lightweight
- 700 bar



MD Series (Midi)

Electric-Hydraulic Pumps

- 0.75 kW TEFC Induction Motor
- Two Stage (2.4 / 0.4 lpm)
- Remote Control Pendant option
- * Compact & Light Weight
- 700-1000-1500 bar



Customise Options

700 bar

Modular Hydraulic Power Pumps

MM Series (Electric – 230V/50Hz/Single Phase)

ME Series (Electric – 400V/50Hz/3 Phase)

MP Series (Air Motor Driven)

MS Series (Petrol Engine Driven)

- Single or Two Stage (0.45 to 16 lpm)
- Externally adjustable pressure relief valve
- Manual or Solenoid, pilot-check valve options
- Accessories: Gauges, Valves, Protective Cages, Remote Controls, Heat Exchangers etc.



Midi Portable Pump

- MD05M21GRX** (3W/2P Manual)
- MD05M31GRX** (3W/3P Manual)
- MD05M41GRX** (4W/3P Manual)
- MD05M42GRX** (" Pilot-Check)

Electric-Hydraulic Pumps

- 0.75 kW TEFC Induction Motor
- Two Stage (2.4 / 0.4 lpm)
- 24VAC Remote Control Pendant
- Gauge & 5 litres Steel Tank



Hi-Flow Pump

- MME10M41R** (4W/3P Manual)
- MME10M42R** (4W/3P Pilot-Check)

Electric-Hydraulic Pumps

- 1.5 kW TEFC Induction Motor
- Two Stage (9.4 / 0.9 lpm)
- 24VAC Remote Control Pendant
- 10 litres Steel Tank

(For Heavy Duty Lifting, Pre-stressing, Construction & Multiple Applications)



Hi-Flow Torque Pump

- MME05WR** (5 litres Steel Tank)
- MME10WR** (10 litres Steel Tank)

Electric-Hydraulic Pumps

- 1.5 kW TEFC Induction Motor
- Two Stage (9.4 / 0.9 lpm)
- 24VAC Remote Control Pendant
- Gauge & Protective Roll Frame
- Single-Tool (4-tool option)

(For Fast Torqueing Operation)

ME / MM - PP Series

(For Geotechnical Structural Tests – Foundation Testing)



- Digital Display – Set Desired Pressure Values
- Automatic Pressure Restore & Cycle Setting
- Automatic or Manual Control
- Two Stage (2.4 / 0.9 lpm)
- Single-acting or Double-acting operation
- Single-phase or 3-phase Electric Motors
- Pressure Gauge, Protective Cage & Reservoir Sizes

Tensioner Pump

- MDM21GJT** (1000 bar)
- MDM21GJV** (1500 bar)

Electric-Hydraulic Pumps

- 0.75 kW TEFC Induction Motor
- Two Stage (1.8 / 0.2 lpm)
- Pressure Gauge & Regulating Valve
- Plastic Frame with carrying handle
- Plastic reservoir tank (2.6 litres)

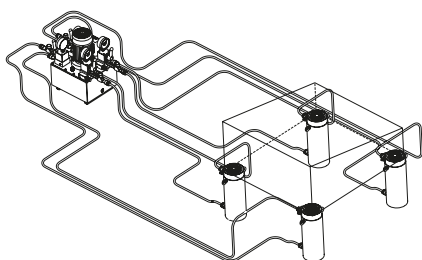
(Compact & lightweight)



ME – SPLIT FLOW Series (Single- or Double-acting Cylinders)

- For Synchronous Lifting System of Multiple Jacking Points with Different Loads or Uneven Load Distribution

- 2 or 4 Independent Hydraulic Pumps & Outlets.
- Single or Two Stage – Each Pump Flow Rate: 0.45 to 2.2 lpm
- 2.2kW Electric TEFC Induction Motor 3-phase (400V/50Hz/3ph)
- Equipped with 4W/3P manual control valves with pilot-check, flow control valves for controlled load lowering, pressure gauges & reservoir capacity up to 100 litres.
- Accuracy: ± 3% Synchronous Lifting with visual control.
- Option of 24VAC Remote Control Motor Pendant & Selector Switch for long approach stroke and single adjustments.
- Option of Integrated Remote System of several pumps for Multiple Jacking Points available.
- **VRB38** Counterbalance Valves can be equipped for automatic control of the down stroke speed of double-acting cylinders without pressure oscillations & load chattering.





Valves & Accessories (700 – 3000 bar)

- Pressure Gauges
- Quick Release Couplers
- High Pressure Hoses (Safety Factor of 4)
- Manual & Solenoid Control Valves
- Flow Control & Regulating Valves
- Manifolds & Fittings
- Hydraulic Oil



UE Series

Hydraulic Puller Sets (10 to 50 Tonne Capacities)

- UEG Series** : 2 & 3 Grip Jaw Puller
- UEZ Series** : Self-aligning 3-jaw Puller
- UET Series** : Press Puller
- UEE Series** : External Puller
- UEI Series** : Internal Puller
- UEU Series** : Cylinder & Hand Pump Set

Manufactured in High Quality Steel

(For Extracting Gears, Bearings, Couplers, Bushings etc.)



UD Series Hydraulic Spreaders

UD1M : 1 tonne capacity

- Min. Clearance- 14mm
- Max. Spread - 80mm

UDS20N10 : 17 tonne capacities

- Min. Clearance- 8mm
- Max. Spread - 64mm

(Lightweight & for confined area)



UJ Series Eurojack Head & Toe Lifting Jacks

- 10 & 20 tonne capacities
- Minimum Clearance: 25mm
- 3 different lifting toe positioning
- Extendable bases for max. stability
- Operates vertically & horizontally
- Jack head can be used for lifting load & pushing application.



UL Series (With Solid Rod) ULF Series (With Hollow Rod) Hydraulic Load Cells

- 5500 to 23000 kg capacities
 - Gauge Scale in kilogram (kg)
 - Accuracy: $\pm 2.5\%$ full scale
 - * Maximum peak indicating pointer
 - Option of load cell with 1m hose
- (Measurement of Force & Load)



UB Series Hydraulic Pipe Benders

- Up to 17 tonne capacities
- Former Set for bending pipe from 3/8" to 4" Nominal Bore Tubes
- Handpump or 3-phase Motor-driven Pump

(Cold-bending without filling in One Shot up to 90° Bends)



UGC Series Mobile Floor Cranes

- 500, 1000 & 2000 kg cap.
- Fully foldable for easy storage
- 3 position fully extendable jib with lifting hook
- Combined cylinder & pump unit swivels
- Safety valve & stroke limitation device



'E' Series

HIGH TONNAGE CYLINDERS

(Safety Factor of 2)

EGS Series – Solid Piston, Single-acting Load Return

EOS Series – Solid Piston, Double-acting Oil Return

EGG Series – Lock Nut, Single-acting Load Return

EOG Series – Lock Nut, Double-acting Oil Return

EGR Series – Lock Nut Pancake, Single-acting Load Return

EOF Series – Hollow Piston, Double-acting Oil Return

- Up to 1500 Tonnes capacities
- 45 to 1800mm Stroke
- Standard Hard Chrome Piston (QPQ-coated Piston & Cylinder Body options)
- Integral Tilt Saddle or Flat Load Saddle options

STRESSING JACKS

Wedge Size options: 12.7mm (0.50") or 15.2mm (0.60")

ESF Series – 30T Single Strand, 200 to 800 mm Stroke

ESM Series – 75 to 1000 Tonne capacities Multi-strand, 200 to 300 mm Stroke

Custom build stressing chuck heads option

Made in U.S.A.



 <h3>TTX Series</h3> <h4>TTX Square Drive Torque Tool</h4> <ul style="list-style-type: none"> • ¾" to 2-½" square drive • 228 to 40,199 Nm (168 to 29,650 ft.lbs.) torque • 180/360° multi-position hose couplers • Efficient mechanical design with 3 moving parts • High quality aluminium & steel alloys • Extended Reaction Arm option (Efficiency in Industrial Maintenance) 	 <h3>TTZ Series</h3> <h4>TTZ Limited Clearance Torque Tool</h4> <ul style="list-style-type: none"> • Hex A/F: 1" to 6-½" (25 to 165mm) • 351 to 49,862 Nm (259 to 36,777 ft.lbs.) torque • 180/360° multi-position hose couplers • Simple connect hex links • High quality internal parts • Extended Reaction Arm, Pad & Hex Drive options (Slim design for universal fit in confined area) <p><i>Optional Reaction Pad</i></p>
--	---

E-POWER700

Quality Products for tough applications in harsh environments.

EURO POWER HYDRAULICS offers a full range of quality E-POWER 700 high pressure hydraulic cylinders, pumps, pullers, tools & systems to meet the most demanding hydraulic application requirements, serving virtually all industrial & construction industries; and marketing through its authorised network of stocking distributors in many locations – products, parts & service availability.



E-POWER 700 products are widely used by customers in industries such as manufacturers, construction, bridge equipment manufacturers, energy, oil & gas, mining, rigging, quarrying, steel & rolling mills, shipbuilding & repairing, offshore marine, power plants, maintenance & repair (MRO), aerospace, railroads, transportation and many other industries requiring hydraulic power.

EURO POWER HYDRAULICS are committed to continued quality improvement and expanding its offering of standard, custom & special products, ensuring continuous customer satisfaction.

Asia Pacific Headquarters &
Customer Service Centre

EURO POWER HYDRAULICS PTE LTD

1 Tuas South Avenue 6 #01-11
THE WESTCOM
Singapore 637021
Tel : +65-6266 2011
Fax : +65-6266 2028
Email : sales@europower700.com

E-POWER700

The Power of Hydraulic Force

- Innovative Products
- Reliable Performance
- High Quality Standards
- Safety
- Product Availability
- Service Support
- Application Solutions
- Project & System Design

Distributed by: