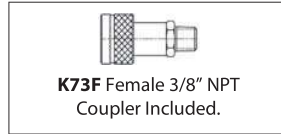
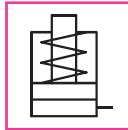


Single-Acting, Spring Return, Low Height Cylinders

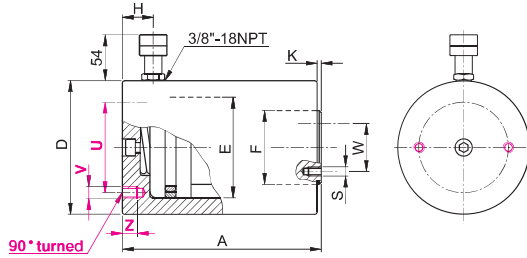
CMP Series



Capacity:
10 - 100 tonnes

Stroke:
25 - 50 mm

Maximum Operating Pressure:
700 bar (10,000 psi)



- Lightweight, low height design for use in confined spaces.
- Grooved piston rod end for improved load grip.
- Wiper seal prevents dirt penetration & extends cylinder working life.
- Nitride anti-corrosive treatment provides excellent corrosion & wear resistance in harsh environments.
- Two threaded holes for mounting an optional tilt saddle.
- Base mounting holes are optional (Version 'F').
- Ideal for general maintenance works, lifting, levelling, support, pressing, assembly and construction operations in restricted working areas &/or tough environments.

ZTT Tilt Saddle (Optional) – to reduce the effects of any off-centred loads. Refer Details Below



SELECTION CHART

Force (PUSH) Tonnes (kN)	Stroke mm	Effective Area cm ²	Oil Volume cm ³	MODEL	Closed Height	Outside Dia.	Bore Dia.	Piston Rod Dia.	Coupler Height	Rod Protrusion	PCD Mounting Holes (Optional)	Mounting Holes / Holes Depth (Optional)	PCD Mounting Holes for Tilt Saddle	Mounting Holes for Tilt Saddle	Weight
					A mm	D mm	E mm	F mm	H mm	K mm	U mm	V/Z mm	W mm	S mm	kg
10 (111)	25	15,86	40	CMP10N25	72	75	45	35	19	1	25	2xM8 6	24	2xM5	2,5
	50	15,86	80	CMP10N50	97										3,2
20 (198)	25	28,29	71	CMP20N25	75	88	60	45	19	1	60	2xM10 10	34	2xM5	3,4
	50	28,29	141	CMP20N50	100										4,2
30 (309)	25	44,14	110	CMP30N25	86	102	75	55	19	1	65	2xM10 13	44	2xM5	5,0
	50	44,14	221	CMP30N50	111										6,1
50 (496)	25	70,86	177	CMP50N25	97	127	95	80	22	1	95	2xM12 15	65	2xM6	7,6
	50	70,86	354	CMP50N50	122										9,1
100 (929)	25	132,71	332	CMP100N25	116	175	130	100	22	2	140	2xM12 17	65	2xM6	17,6
	50	132,71	664	CMP100N50	141										20,5

Nominal value shown in 'Tonnes', see kN for the exact force @700bar.

ACCESSORIES: ZTT TILT SADDLES

MODEL	For use with	a	b	j	z	w	kg
		ZTT10	CMP10N # #	16	1	34	5,5
ZTT20	CMP20N # #	18	43	34		0,2	
ZTT30	CMP30N # #	19	53	44		0,3	
ZTT50	CMP50N # #	25	2	68	6,5	65	0,9
ZTT100	CMP100N # #	34		88			1,7

MODEL CODING

CMP	10	N	# #	#
Series	Pushing Force in tonne	N = Standard	Stroke in mm	F = with Base Mounting Holes