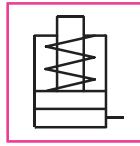


Single-Acting, Spring Return, General Purpose Cylinders

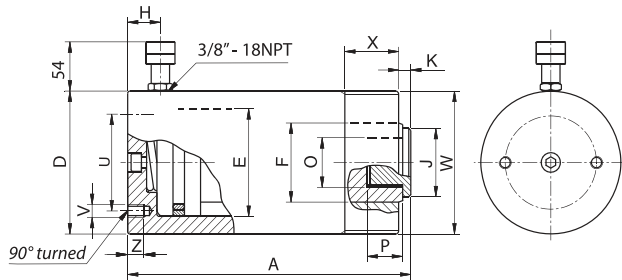
CMI Series



Capacity:
5 - 100 tonnes

Stroke:
25 - 350 mm

Maximum Operating Pressure:
700 bar (10,000 psi)



- Superior Bearing Design reduces wear & prolongs life.
- Collar threads, piston rod internal threads & base mounting holes provides easy fixturing & adaptability.
- Operate in any directional position.
- Heavy-duty spring improves retracting speed.
- Removable hardened grooved saddle for good load grip.
- Wiper seal prevents dirt penetration & extends cylinder working life.
- Nitride anti-corrosive treatment provides excellent corrosion & wear resistance in harsh environments.
- Carrying handle for 50 tonnes & above models.
- Extremely versatile & suitable for wide range of industrial applications.

ZTT Tilt Saddle (Optional) – to reduce the effects of any off-centred loads. Refer Page 23.



SELECTION CHART

| Force (PUSH) | Stroke | Effective Area | Oil Volume | MODEL | Closed Height | Outside Dia. | Bore Dia. | Piston Rod Dia. | Coupler Height | Saddle Dia. | Rod Protusion | Rod Internal Thread | Rod Thread Depth | PCD Mounting Holes | Base Mounting Holes/ Holes Depth | Collar thread/ Thread Length | Weight |
|--------------|--------|----------------|------------------|-------------------|---------------|--------------|-----------|-----------------|----------------|-------------|---------------|---------------------|------------------|--------------------|-------------------------------------|---------------------------------|--------|
| | | | | | A mm | D mm | E mm | F mm | H mm | J mm | K mm | O mm | P mm | U mm | V/Z mm | W/X mm | kg |
| 5 (49,5) | 25 | 7,07 | 18 | CMI5N25 | 92 | 40 | 30 | 25 | 19 | 24,5 | 2 | M16x1,5 | 14 | 25 | M6 10 | M40x1,5 28 | 1,1 |
| | 50 | 7,07 | 35 | CMI5N50 | 117 | | | | | | | | | | | | 1,3 |
| | 75 | 7,07 | 53 | CMI5N75 | 142 | | | | | | | | | | | | 1,5 |
| | 125 | 7,07 | 88 | CMI5N125 | 202 | | | | | | | | | | | | 1,9 |
| | 175 | 7,07 | 124 | CMI5N175 | 252 | | | | | | | | | | | | 2,3 |
| | 225 | 7,07 | 159 | CMI5N225 | 302 | | | | | | | | | | | | 2,7 |
| 10 (111) | 25 | 15,86 | 40 | CMI10N25 | 83 | 60 | 45 | 35 | 19 | 34 | 5 | M24x2 | 15 | 39 | M8 12 | M60x1,5 28 | 2,0 |
| | 50 | 15,86 | 80 | CMI10N50 | 120 | | | | | | | | | | | | 2,6 |
| | 100 | 15,86 | 159 | CMI10N100 | 170 | | | | | | | | | | | | 3,5 |
| | 150 | 15,86 | 238 | CMI10N150 | 245 | | | | | | | | | | | | 4,7 |
| | 200 | 15,86 | 318 | CMI10N200 | 295 | | | | | | | | | | | | 5,6 |
| | 250 | 15,86 | 398 | CMI10N250 | 345 | | | | | | | | | | | | 6,5 |
| | 300 | 15,86 | 477 | CMI10N300 | 408 | | | | | | | | | | | | 9,03 |
| 350 | 15,86 | 557 | CMI10N350 | 458 | 10 | | | | | | | | | | | | |
| 25 (232) | 25 | 33,14 | 83 | CMI25N25 | 119 | 85 | 65 | 55 | 19 | 53 | 9 | M32x2 | 16 | 58 | M10 14 | M85x2 40 | 4,6 |
| | 50 | 33,14 | 166 | CMI25N50 | 144 | | | | | | | | | | | | 5,3 |
| | 100 | 33,14 | 332 | CMI25N100 | 214 | | | | | | | | | | | | 7,5 |
| | 150 | 33,14 | 498 | CMI25N150 | 264 | | | | | | | | | | | | 8,8 |
| | 200 | 33,14 | 664 | CMI25N200 | 314 | | | | | | | | | | | | 10,2 |
| | 250 | 33,14 | 830 | CMI25N250 | 364 | | | | | | | | | | | | 11,6 |
| | 300 | 33,14 | 996 | CMI25N300 | 414 | | | | | | | | | | | | 13,0 |
| | 350 | 33,14 | 1161 | CMI25N350 | 464 | | | | | | | | | | | | 15,0 |
| 30 (309) | 210 | 44,14 | 928 | CMI30N210 | 386 | 102 | 75 | 55 | 47 | 53 | 9 | M32x2 | 16 | - | - | 3 sn/6"-12 49 | 18,4 |
| 50 (496) | 50 | 70,86 | 354 | CMI50N50 | 164 | 127 | 95 | 80 | 25 | 65 | 4 | M16 | 12 | 95 | M12 18 | M125x2 40 | 14,2 |
| | 100 | 70,86 | 709 | CMI50N100 | 214 | | | | | | | | | | | | 17,4 |
| | 150 | 70,86 | 1063 | CMI50N150 | 264 | | | | | | | | | | | | 20,8 |
| | 325 | 70,86 | 2304 | CMI50N325 | 439 | | | | | | | | | | | | 32,6 |
| 100 (929) | 100 | 132,71 | 1327 | CMI100N100 | 246 | 175 | 130 | 100 | 26 | 85 | 4 | M16 | 17 | 140 | M12 18 | M168x2 51 | 39,6 |
| | 150 | 132,71 | 1991 | CMI100N150 | 296 | | | | | | | | | | | | 46,0 |

Nominal value shown in 'Tonnes', see kN for the exact force @700bar. ⊗ Mounting holes for ZTT10 tilt saddle