

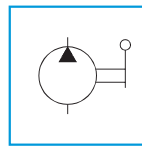
Steel Hand Pumps (Single-Speed)

PS Series

Reservoir Capacity:
0,42 to 0,8 litres

Oil Delivery at Rated Pressure:
1,0 – 2,3 cu.cm./stroke

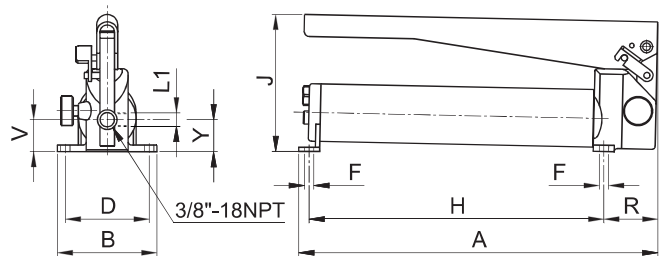
Maximum Operating Pressure:
400 – 700 – 1000 bar



G106L Gauge
(Optional)



- All steel construction for long lasting operation.
- 1/4" NPT side port to mount G106L gauge.
- Externally adjustable pressure relief valve.
- Handle locking mechanism for ease of carrying.
- Can be used vertically with pump head facing down.
- Feature wide feet for ease of pump mounting.
- Ideal for use with small hydraulic tools &/or single-acting cylinders that requires lesser oil.



SELECTION CHART

Pump Type (Speed)	Max Pressure bar	Oil Delivery per Stroke cm ³	Handle Effort N	For use with Cylinder Tool	Reservoir Capacity cm ³	Usable Oil Volume cm ³	MODEL	Dimensions (mm)										Weight kg
								A	B	D	F	H	J	L1	R	V	Y	
Single	700	1,0	280	Single-acting	420	300	PS100	340	95	80	9	280	130	1/4" NPT	50	32,5	32,5	3,2
	1000		380				PS10010											
	400	2,3	350		PS10004	340	280											
	700		390		PS101	565	505	4,5										

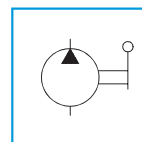
Steel Hand Pumps with Large Oil Delivery (Two-Speed)

PV Series

Reservoir Capacity:
9,3 to 19,4 litres

Oil Delivery at Rated Pressure:
4,8 cu.cm./stroke

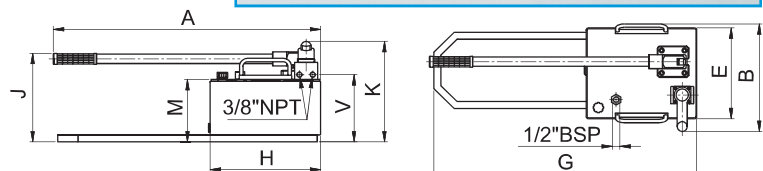
Maximum Operating Pressure:
700 bar (10,000 psi)



G10 Gauge
(Optional)



- All steel construction for long lasting operation.
- 1/2" BSP connection for direct gauge connection.
- Externally adjustable pressure relief valve.
- Carrying Handle.



SELECTION CHART

Pump Type (Speed)	Pressure 1 st stage bar	Pressure 2 nd stage bar	Oil Delivery per Stroke 1 st stage cm ³	Oil Delivery per Stroke 2 nd stage cm ³	Handle Effort N	For use with Cylinder Tool	Reservoir Capacity litres	Usable Oil Volume litres	MODEL	Dimensions (mm)										Weight without Oil kg	Weight with Oil kg
										A	B	E	G	H	J	K	M	V			
Two	20	700	125	4,8	450	Single-acting	9,3	7,7	PV1810	763	261	245	750	315	257	290	180	194	20,9	29	
							19,4	16	PV1820				-	650	245	278	168	182	23,1	40	
							Double-acting	9,3	7,7				PV2810	750	315	257	290	180	194	20,9	29
								19,4	16				PV2820	-	650	245	278	168	182	23,1	40
						Double-acting with controlled check valve	9,3	7,7	PV4810		750		315	257	290	180	194	20,9	29		
							19,4	16	PV4820		-		650	245	278	168	182	23,1	40		