

# Modular Hydraulic Power Pumps with 3-Phase Electric Motor

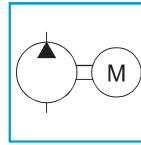
## ME Series

Reservoir Capacity:  
**5 to 50 litres**

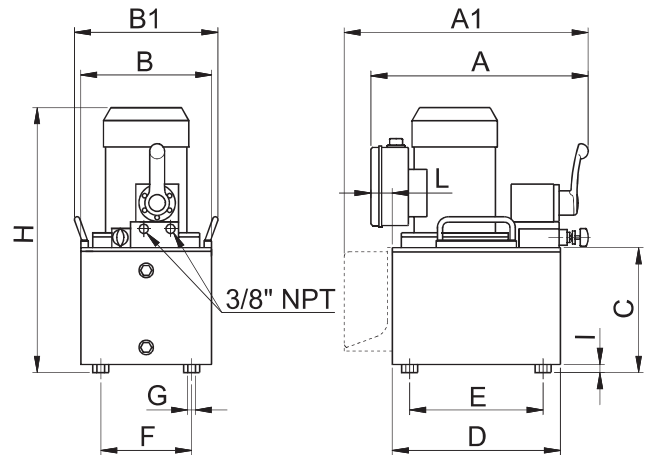
Oil Delivery at Rated Pressure:  
**0,45 – 2,5 litre/min.**

Motor Size:  
**0,75 – 3 kW (1 – 4 hp)**

Maximum Operating Pressure:  
**700 bar (10,000 psi)**



Picture illustrated with optional accessories.



### DIMENSIONS

Reservoir Capacity	Usable Oil Volume	Dimensions (mm)											
		litres	litres	A	A1 <sup>①</sup>	B	B1	C	D	E	F	G	H
5	3,8	370	470	245	270	129	315	250	170	M8	390 <sup>②</sup>	10	40
10 high	8,8	447	470	245	270	227	410	320	270	M8	488 <sup>②</sup>		
10 low	7,7					360					129		
20	17,7	462	-	600	-	257	440	350	510	∅9	518 <sup>②</sup>	40	-
40	35,8	447	-	360	-	343	410	320	270		640		
MEK 30	22	462	-	600	-	307	440	350	510		634		
MEV 30	20	447	-	360	-	307	440	350	510	∅9	634	40	-
MEV 50	32	462	-	600	-	307	440	350	510	∅9	634	40	-

- ① Add 16 mm for models **MEC, MEH**; add 40 mm for models **MEL, MEF, MEG, and MET**.
- ② For power packs with **5 l** and **10 l** high tanks with remote control model **R** or **F** only.



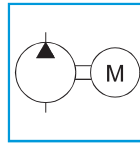
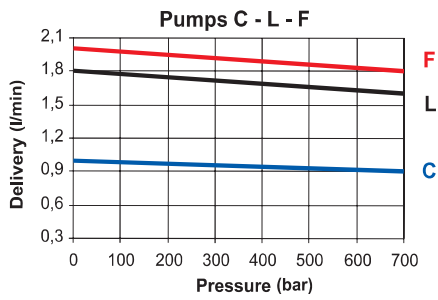
**MEK** power packs are particularly indicated for intensive use or when a very noiseless product is required.

### Operating Characteristics

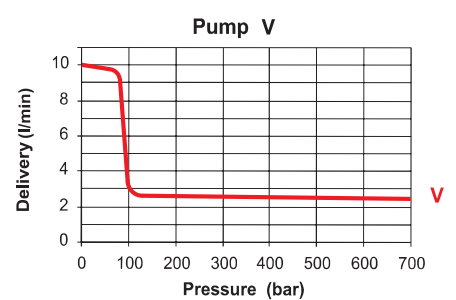
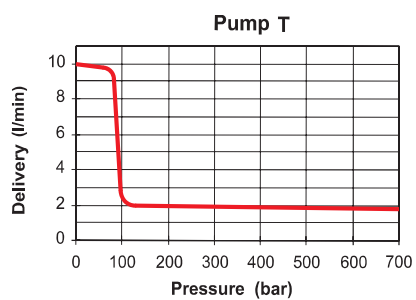
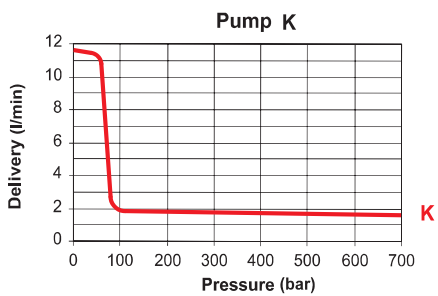
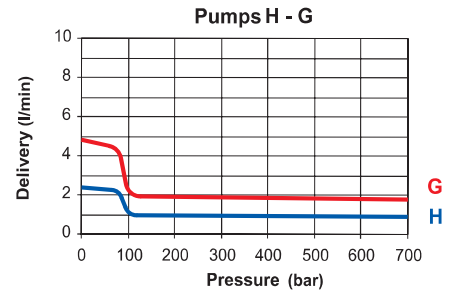
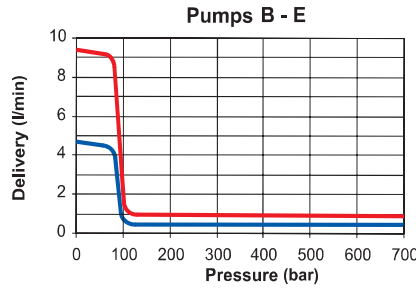
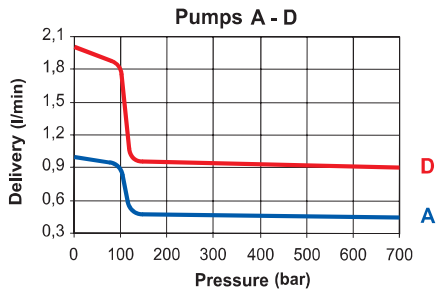
MODEL	Oil Delivery		Pressure		TEFC Induction Motor		
	1 <sup>st</sup> Stage	2 <sup>nd</sup> Stage	1 <sup>st</sup> Stage	2 <sup>nd</sup> Stage	Voltage	Power	Speed
	l/min	l/min	bar	bar		kW	rpm
<b>MEA</b>	0,9	0,45	100	700	400V-50Hz (3-phase) (Motors with different voltage upon request)	0,75	1400
<b>MEB</b>	4,7		85				
<b>MEC</b>	-		-				
<b>MED</b>	1,8	0,9	100				
<b>MEH</b>	2,4		85				
<b>MEE</b>	9,4		-				
<b>MEL</b>	-	1,6	-				
<b>MEK</b>	11,6		70				
<b>MEF</b>	-		-				
<b>MEG</b>	4,7	1,8	85				
<b>MET</b>	10		85				
<b>MEV</b>	-		2,5				
						2,2	2800
						3	1400

# Modular Hydraulic Power Pumps with 3-Phase Electric Motor

## ME Series



Picture illustrated with optional accessories.



### SELECTION CHART

For Use with Cylinder Tool	MODEL	Valve Control	*Oil Delivery		Pressure		†Motor 400V – 50Hz (3-phase)			Usable Oil Volume litres
			1 <sup>st</sup> Stage	2 <sup>nd</sup> Stage	1 <sup>st</sup> Stage	2 <sup>nd</sup> Stage	Power	Speed	Poles	
			l/min	l/min	bar	bar	kW	rpm		
Single-acting	MEG20M32	3-Way Manual Valve with Check	4,7	1,8	85	700	2,2	2800	2	17,7
	MEG20E31R	3-Way Solenoid Valve with Remote Control								
Double-acting	MEG20M42	4-Way Manual Valve with Check	4,7	1,8	85	700	2,2	2800	2	17,7
	MEG20E42R	4-Way Solenoid Valve with Check & Remote Control								
Single-acting	MEK20M32	3-Way Manual Valve with Check	11,6	1,6	70	700	2,2	1400	4	17,7
Double-acting	MEK20M42	4-Way Manual Valve with Check								
Single-acting	MEV50M32	3-Way Manual Valve with Check	10	2,5	85	700	3	1400	4	32
Double-acting	MEV50M42	4-Way Manual Valve with Check								

\* Two Speed Pump Version

† Motors with higher power and different voltage available upon request.