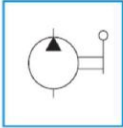


# EPower700

## HYDRAULIC STEEL HAND PUMPS

*For Single-Acting Cylinders or Tools*



Reservoir Capacity:  
**705 - 2,000 cm<sup>3</sup>**

Oil Delivery at Rated Pressure:  
**2.8 - 3.3 cm<sup>3</sup>/stroke**

Maximum Operating Pressure:  
**700 bar (10,000 psi)**

### DESCRIPTION

- Single- & 2-speed pump types.
- Rugged steel body construction for long lasting performance and won't burn through in welding environments.
- Low handle efforts & easy to use.
- Quick grip handle provides ease of carrying.
- Large load release valve knob for metering loads down slowly.
- Can be used vertically with pump head facing down.
- Pressure relief valve for overload protection.
- 3/8" NPT Port.
- Ideal for use with single-acting hydraulic cylinders or tools requiring tough hand pumps for use in harsh environments.



**P-43**



**P-90**



**P-122**

Model	Pump Type (Speed)	Pressure 1 <sup>st</sup> Stage (bar)	Pressure 2 <sup>nd</sup> Stage (bar)	Oil Delivery 1 <sup>st</sup> Stage (cm <sup>3</sup> /stroke)	Oil Delivery 2 <sup>nd</sup> Stage (cm <sup>3</sup> /stroke)	Usable Oil Volume (cm <sup>3</sup> )	Weight (kg)
<b>P-43</b>	Single	-	700	-	3.2	705	7.7
<b>P-90</b>	Two	14	700	13	2.8	1,500	12
<b>P-122</b>	Two	21	700	13	2.8	1,800	12.7

**EURO POWER HYDRAULICS PTE LTD**

1 Tuas South Avenue 6 #01-11, THE WESTCOM, Singapore 637021

Tel: +65-6266 2011 • Fax: +65-6266 2028 • Email: sales@europower700.com • WWW.EUROPOWER700.COM

The product images shown are for illustration purposes only and may not be an exact representation of the product. EURO POWER HYDRAULICS reserves the right to change product images and specifications at any time without notice.